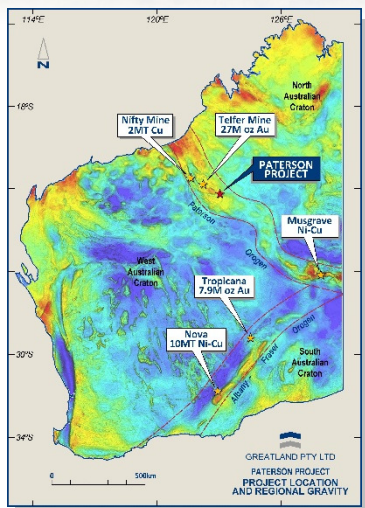
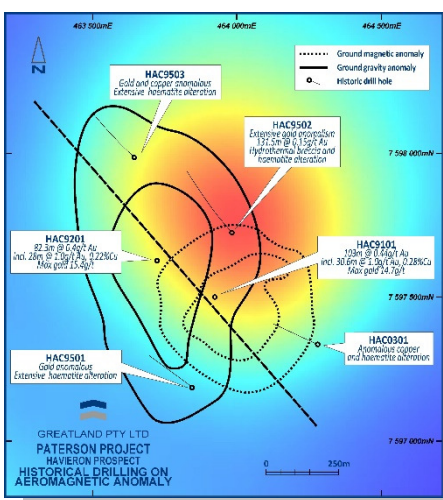
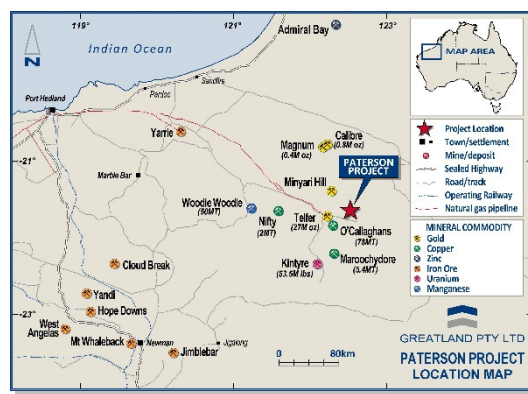


PATERSON PROJECT



- Located 500km SE of Port Hedland and 40km E of Telfer
- IOCG-type deposit indicated
- 360km² of the Proterozoic Paterson Orogen of the Pilbara
- Good infrastructure with several operating mines, sealed roads, formed tracks and rail networks nearby
- Historic data defines a drill ready 1,000m x 1,000m target
- Additional regional targets also outlined

- Licence area is part of the Paterson Province in the northern part of the Proterozoic Paterson Orogen
 - Globally, Proterozoic orogens are highly prospective for large deposit and are often under-explored
 - Regionally, Proterozoic orogens host Tropicana (7.9M oz Au) and Nova (10MT Ni-Cu) deposits
- Numerous mines operate locally, including Telfer (27M oz Au), Nifty (2MT Cu), Magnum & Calibre (1.2M oz Au combined), O'Callaghans (78MT Cu)



- Geophysics data outlines the Havieron target: 1,000m x 1,000m at a depth of 400m
- Historic drilling intersected significant alteration with gold and copper anomalies
 - Holes indicate high grade zones peaking at 15.4g/t Au and 2.5% Cu.
 - Drill target is open in all directions and at depth
- Alteration and mineralisation indicates an Iron Oxide Copper-Gold (IOCG)-type deposit
 - Other IOCG-type deposits include large scale mines such as Olympic Dam and Ernest Henry in central and eastern Australia