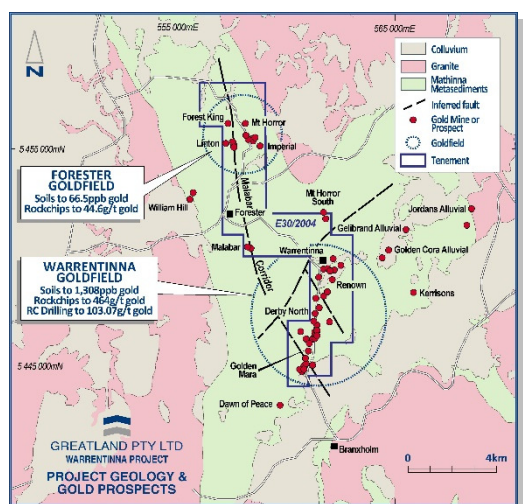
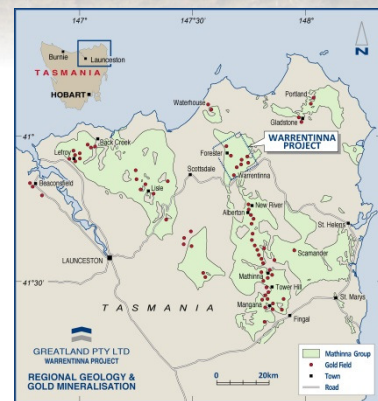


WARRENTINNA GOLD PROJECT

- Located 60km NE of Launceston in NE Tasmania.
- Warrentinna covers an area of 37km² with 15km of strike prospective for gold.
- 2970m drilled to date with over 3500m of historical drill data also obtained.
- Drilling result highlights include: 26m@2.32g/t Au, 5m@29.26g/t Au, 3m@9.34g/t, 2m@13.71g/t Au, 1m@19.77g/t Au & 1m@103.07g/t Au.
- Host rocks equivalent to the goldfields in Victoria, south-eastern Australia (+50mil oz gold).



- Work to date: geological mapping, soil sampling, rock chip sampling & drilling.
- Mineralisation is from surface & drilling shows high potential for extension of mineralisation at depth.
- Potential for open pittable gold resources.
- Further RC drilling required at Derby North & other prospects.
- Many other prospects to be fully evaluated.



Drill rigs in operation on site



- Gold mineraliation from drill holes is coincident with quartz vein structures & disseminated sulphides.
- The Mathinna Group is equivalent to the Melbourne Trough geology which host the bulk of Victoria's gold mineralisation (+50mill oz Au).
- The tenement hosts Mathinna Group metasediments which have undergone multiple regional deformation events resulting in passive low grade metamorphism & folding. Devonian granite intrusions occur with some contact metamorphism present. Gold is likely to have been emplaced during this intrusive period.
- Historic high grade lodes were mined at Warrentinna, Forester & Waterhouse (1880-1940), eg Golden Mara mine 3,368oz at average of 1oz/tonne.

