

# Building a platform for growth

5 March 2024

Shaun Day, Managing Director

# Disclaimer

The summary information contained in this document has been provided solely for information purposes and does not purport to be comprehensive or contain all the information that may be required by recipients to evaluate Greatland Gold plc (**Greatland** or **Company**). This document and the information contained in it has not been independently verified and no reliance should be placed on it or the opinions contained within it. In furnishing this document, the Company reserves the right to amend or replace this document at any time and undertakes no obligation to provide the recipient with access to any additional information. In all cases, readers should conduct, at their own cost, their own investigation, analysis and evaluation of the Company's business, prospects, operational and financial performance, and condition and should seek their own independent financial, legal or other advice in relation to such matters.

No undertaking, representation, warranty or other assurance, express or implied, is made or given by or on behalf of the Company, its subsidiary undertakings, or any of their respective directors, officers, partners (including joint venture partners), employees, agents or advisers, or any other person, as to the accuracy or completeness of this document or the information contained herein. Accordingly, no responsibility or liability (direct, indirect, consequential or otherwise), whether arising in tort, contract or otherwise, is accepted by any of them for the information or opinions contained in, or for any errors, omissions or misstatements (negligent or otherwise) in, this document or for any loss howsoever arising, directly or indirectly, from any use of such information or opinions.

None of the Company, its subsidiary undertakings, their respective directors, officers, employees, agents, affiliates and advisers, or any other party undertakes or is under any duty to update this document or to correct any inaccuracies in any such information which may become apparent or to provide you with any additional information, in each case, except as required by law or by any appropriate regulatory authority.

This document does not constitute or form part of any offer or invitation or inducement to sell or issue, or any solicitation of any offer to purchase or subscribe for, any securities of the Company nor shall any part of it or the fact of its distribution form part of or be relied upon in connection with any contract or investment decision relating thereto. This document does not constitute a recommendation regarding the securities of the Company. In particular, this document and the information contained herein does not constitute an offer of securities for sale in the United States of America, its territories or possessions.

Neither this document nor any copy of it may be taken or transmitted into the United States of America, its territories or possessions or distributed, directly or indirectly, in the United States of America, its territories or possessions. Neither this document nor any copy of it may be taken or transmitted into Canada, Japan or the Republic of South Africa or to any securities analyst or other person in any of those jurisdictions. Any failure to comply with this restriction may constitute a violation of United States, Canadian, Japanese or South African securities law. The distribution of this document in other jurisdictions may be restricted by law and persons into whose possession this document comes should inform themselves about, and observe, any such restrictions.

This document includes certain "forward-looking statements". All statements other than statements of historical fact included in this document, including without limitation statements regarding the future plans and objectives of the Company, are forward-looking statements that involve various risks and uncertainties. These forward-looking statements include, but are not limited to, statements with respect to pursuing successful production, development and exploration programs, and other information that is based on forecasts of future operational or financial results, estimates of amounts not yet determinable and assumptions of management. Any statements that express or involve discussions with respect to predictions, expectations, beliefs, plans, projections, objectives, assumptions or future events or performance (often, but not always, using words or phrases such as "expects" or "does not expect", "is expected", "anticipates" or "does not anticipate", "plans", "estimates" or "intends" or stating that certain actions, events or results "may", "could", "would", "might" or "will" be taken, occur or be achieved) are not statements of historical fact and may be "forward-looking statements". Forward-looking statements are subject to a variety of risks and uncertainties that could cause actual events or results to differ from those reflected in the forward-looking statements. There can be no assurance that forward-looking statements will prove to be accurate and actual results and future events could differ materially from those anticipated in such statements. Important factors that could cause actual results to differ materially from the Company's expectations include, among others, risks related to the ability to raise additional capital, future commodity prices and changes in commodity prices, foreign exchange fluctuation, general economic conditions, proposed expenditure for exploration, development or production and general and administrative expenses, the actual results of current exploration activities, conclusions of economic evaluations, changes in project parameters as plans continue to be refined, development progress, increased costs and demand for production inputs, the speculative nature of exploration and project development, risks of obtaining necessary licences and permits and diminishing quantities or grades of reserves, political and social risks, changes to the regulatory framework within which Greatland operates or may in the future operate, environmental conditions including extreme weather conditions, recruitment and retention of personnel, industrial relations issues and litigation. There can be no assurance that such statements will prove to be accurate as actual results and future events could differ materially from those anticipated in such statements. Accordingly, readers should not place undue reliance on forward-looking statements. Nothing in this document or in the documents referred to in it should be considered as a profit forecast.

The price of the shares in Greatland (Shares) may decline and investors could lose all or part of their investment; the Shares offer no guaranteed income and no capital protection; and an investment in the Shares is compatible only with investors who do not need a guaranteed income or capital protection, who (either alone or in conjunction with an appropriate financial or other adviser) are capable of evaluating the merits and risks of such an investment and who have sufficient resources to be able to bear any losses that may result therefrom. Past performance of the Company or the Shares is not a guide to future performance.

Certain of the industry, market and competitive position data contained in this document comes from the Company's own internal research and estimates based on the knowledge and experience of the Company's management in the market in which the Company operates. While the Company believes that such research and estimates are reasonable and reliable, they, and their underlying methodology and assumptions, have not been verified by any independent source for accuracy or completeness and are subject to change without notice. Accordingly, undue reliance should not be placed on any of the industry, market and competitive position data or forward-looking statements contained in this document.

This document has not been approved by any competent regulatory or supervisory authority.

# Acknowledgement of Country

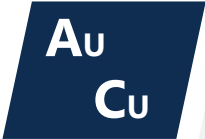
Greatland acknowledges and pays respect to the many Traditional Owner groups upon whose land we operate and honour their cultural connections to their ancestral lands

We value our continuing partnerships with Indigenous peoples and accept our shared responsibility to care for Country





# Investment highlights



Havieron is a world-class, high-grade gold-copper development project located in a low-risk jurisdiction, presently owned in a joint venture with Newmont Corporation<sup>(1)</sup> 



Mineral Resource of 8.4Moz AuEq<sup>(2)</sup> underpins long mine life with extension opportunities



Existing Telfer infrastructure has potential to de-risk future operations at Havieron<sup>(3)</sup>



Significant exploration upside from highly prospective tenure across Western Australia including a joint venture with Rio Tinto on the Paterson South tenure



Letter of support for proposed A\$220m debt funding from syndicate banks



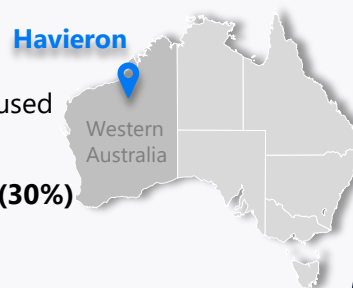
Strong growth platform backed by strategic investors and experienced leadership team with track record of delivery



(1) The Havieron project is a joint venture owned 30% by Greatland and 70% by Newmont.  
(2) Greatland Mineral Resource Estimate inclusive of Ore Reserve and stated on a 100% basis (noting that Greatland's interest in Havieron is 30%.) Refer to Appendix at the end of this presentation for more information on Greatland's Mineral Resource and Ore Reserves  
(3) Subject to a positive feasibility study, positive decision to mine, entry into a toll processing agreement and any other infrastructure agreements, and the establishment of an infrastructure corridor and haul road

# Company overview

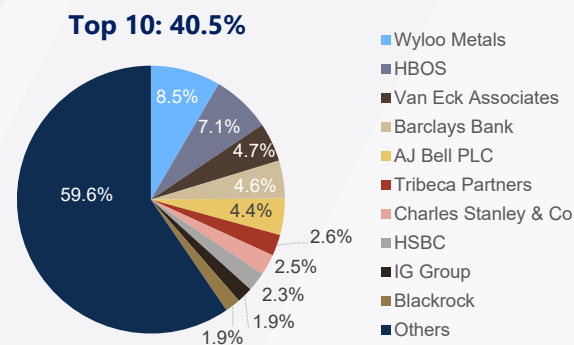
- Greatland Gold (AIM:GGP) ("Greatland") is a leading precious and base metals focused mining development and exploration company
- Greatland's cornerstone asset is the **world-class Haveron gold-copper deposit (30%)** in the relatively under-explored Paterson Province of **Western Australia**
  - Discovered by Greatland in 2018** and **significant early works development completed** to date including 2,110m of main access decline development. Presently owned in joint venture with Newmont (NYSE:NEM)
  - Updated Feasibility Study** ongoing, assessing up to 3Mtpa throughput with several value enhancing options underway to maximise value and de-risk the project
  - Updated Greatland Mineral Resource Estimate** (December 2023): Estimated gold equivalent metal content to **8.4Moz AuEq<sup>(1)</sup>**, with higher confidence Indicated category totaling **5.0Moz AuEq at 3.1g/t AuEq<sup>(1)</sup>**
- ASX listing targeted** for 2024 H2



## Capitalisation<sup>(2)</sup>

Share price	£0.07	A\$0.13
Shares outstanding	5,168m	5,168m
<b>Market capitalisation</b>	<b>£338m</b>	<b>A\$659m</b>
Cash (at 31 Dec 2023)	£13m	A\$25m
Debt (at 31 Dec 2023)	£41m	A\$80m
<b>Net cash</b> (at 31 Dec 2023)	<b>(£28)</b>	<b>(A\$55)</b>
Standby debt facility <sup>(3)</sup>	£26m	A\$50m

## Top 10 shareholders<sup>(2)</sup>



(1) Greatland Mineral Resource Estimate inclusive of Ore Reserve and are stated on a 100% basis noting that Greatland's interest in Haveron is 30%. Refer to Appendix at the end of this presentation for more information on Greatland's Mineral Resources and Ore Reserves

(2) Market data and share ownership data sourced from S&P Capital IQ Pro as at 4 March 2024. Converted from GBP to AUD at spot AUD:GBP of 0.51 on 4 March 2024

(3) A\$50m unsecured standby loan facility entered into with Wyloo Metals in September 2023, available to 1 December 2024, matures 31 December 2024.

# Our values



## Integrity

We are honest and act with integrity and respect



## Safety

We operate with a focus on safety first to maintain a responsible footprint and keep our workplace safe



## Teamwork

We promote a culture of collaboration and speaking freely to benefit from a diverse range of perspectives



## Accountability

We are accountable for our actions and build strong relationships through open communication



## Responsibility

We perform to the best of our ability with a responsibility to our stakeholders, our environment and our planet



## Results

We aim for the highest standards of performance and conduct in everything we do

# Growth focused strategy

Greatland has a clear growth strategy which is built on three horizons

## 1 Havieron

**Continued advancement of the world-class Havieron project through to production**

- Large resource, long life project in excellent jurisdiction
- Large-scale open stoping mining method lowers operating costs
- Existing Telfer infrastructure has potential to de-risk future operations<sup>(1)</sup>

## 2 Exploration and discovery

**Highly prospective tenure across Western Australia**

- Strategic ~2,600km<sup>2</sup> landholding in the Paterson Province of Western Australia
- Advanced Paterson understanding primes Greatland for further discovery
- Experienced team with proven ability in exploration success

## 3 Corporate development

**Active growth focus to build a multi-mine producer**

- Active business development team; shareholders supportive of growth
- Open to financially disciplined growth opportunities; focus on precious and base metals
- ASX cross-listing targeted for 2024 H2

<sup>(1)</sup> Subject to a positive feasibility study, positive decision to mine, entry into a toll processing agreement and any other infrastructure agreements, and the establishment of an infrastructure corridor and haul road

<sup>(2)</sup> Includes tenements subject to earn ins, Joint ventures and uncontested tenement applications



# Executive team



**Shaun Day**  
Managing Director

- Mining and infrastructure focused finance executive
- Former CFO of Northern Star Resources, Sakari Resources and Straits Resources



**Jimmy Wilson**  
Executive Director

- Mining engineer with deep operational experience
- Former President of Iron, Energy Coal and Stainless Steel Materials at BHP



**Simon Tyrrell**  
Chief Operating Officer

- Metallurgical engineer with extensive precious and base metals operational experience
- Former GM Processing, Asset Management and Major Projects at Northern Star



**Monique Connolly**  
Acting Chief Financial Officer

- Qualified Chartered Accountant with experience across public companies
- Former senior finance positions at ConocoPhillips and Santos



**Matt Kwan**  
General Counsel

- Qualified lawyer specialising in M&A, joint ventures and equity capital markets
- Former General Manager Legal at Aquila Resources



**Rowan Krasnoff**  
Head of Business Development

- M&A, financings, joint ventures and investments transactions specialist
- Former Business Development Manager at Fortescue Metals Group

# Board of directors



**Mark Barnaba**  
Non-Executive Chairman

- Deputy Chairman of Fortescue Metals Group
- Former Board Member of the Reserve Bank of Australia



**Elizabeth Gaines**  
Non-Executive Deputy Chair

- Former Chief Executive Officer and current Executive Director of Fortescue Metals Group
- Non-Executive Director of Victor Chang Cardiac Research Institute and West Coast Eagles (AFL)



**Alex Borrelli**  
Non-Executive Director

- Chartered Accountant with extensive investment banking experience
- Director of Bradda Head Lithium, Red Rock Resources, Tiger Royalties



**Yasmin Broughton**  
Non-Executive Director

- Extensive experience in corporate law, M&A, governance, risk management and compliance
- Non-Executive Director of RAC Group, Synergy and Wright Prospecting



**Clive Latcham**  
Non-Executive Director

- Chemical engineer and mineral economist
- Former Copper Group Mining Executive at Rio Tinto



**Paul Hallam**  
Non-Executive Director

- Former Director of Operations at Fortescue Metals Group
- Former Executive General Manager of Development and Projects at Newcrest





# Havieron snapshot

## OWNERSHIP

Greatland (30%)  
Newmont (70%, Manager)

## STATUS

Pre-Feasibility Study completed  
Early works in progress  
Feasibility Study in progress

## HAVIERON ORE RESERVE (GREATLAND, MARCH 2022)

**2.9**Moz Au Eq @ **3.7** g/t AuEq<sup>(1)</sup>

## HAVIERON MINERAL RESOURCE (GREATLAND, DECEMBER 2023)

**8.4**Moz AuEq @ **2.0** g/t AuEq<sup>(1)</sup>  
including **Indicated:**  
**5.0**Moz AuEq @ **3.1** g/t AuEq<sup>(1)</sup>

## COMMODITIES

**Au** **Cu**

## CURRENT ACTIVITIES

- Feasibility Study ongoing, targeting 3Mtpa throughput with several value enhancing options underway to maximise value and de-risk the project
- Significant early works completed with total underground development of 3,060 metres including 2,110 metres of the main access decline complete<sup>(2)</sup>
- 80 vertical metres remaining for main access decline to reach the top of the Havieron ore body (340 vertical metres complete)
- Decline successfully developed through the upper and middle aquifer. Dewatering of final lower aquifer underway prior to resuming development

(1) Greatland Mineral Resource Estimate inclusive of Ore Reserve and are stated on a 100% basis noting that Greatland's interest in Havieron is 30%. Refer to Appendix at the end of this presentation for more information on Greatland's Mineral Resources and Ore Reserves  
(2) As at 31 December 2023

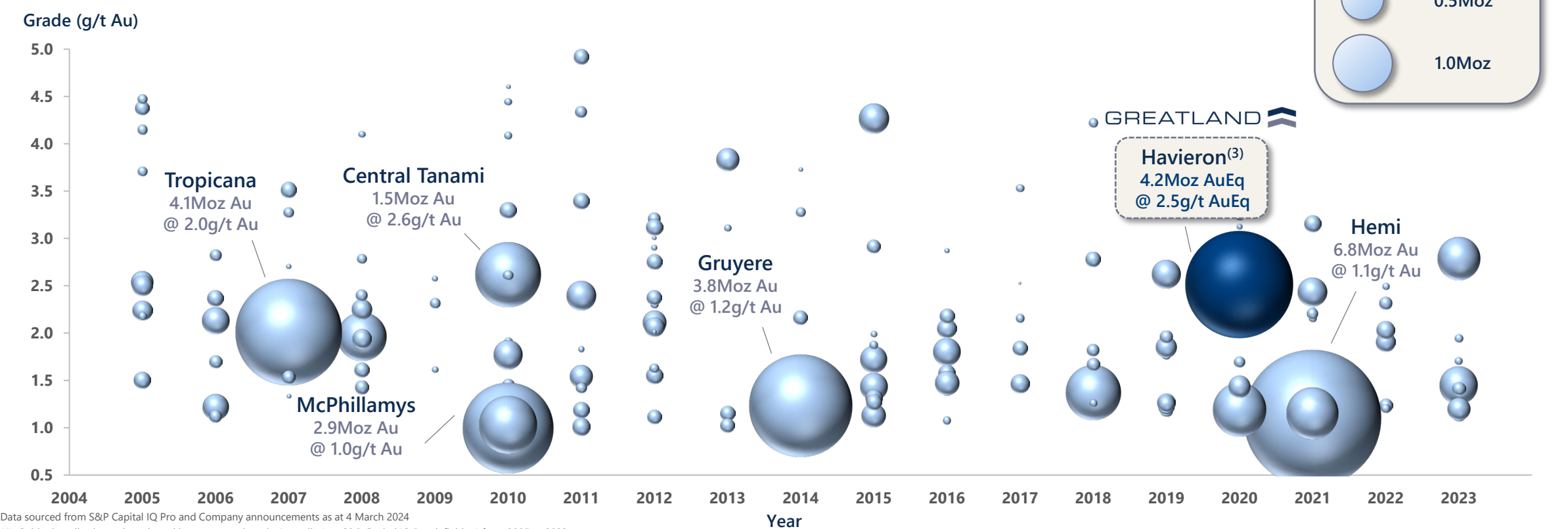


# Havieron vs greenfield Australian gold project discoveries

Havieron ranks as one of the largest high-grade gold discoveries in Australia over the last two decades at maiden Mineral Resource announcement

## Australian Gold Projects<sup>(1)</sup> - Maiden Mineral Resource by Year<sup>(2)</sup>

Grade > 1g/t Au and < 5g/t Au  
Grade and contained ounces shown in Au only for comparable projects, AuEq for Havieron<sup>(2)</sup>, <sup>(3)</sup>



Data sourced from S&P Capital IQ Pro and Company announcements as at 4 March 2024

(1) Gold mineralisation only early and late-stage projects in Australia (per S&P Capital IQ Pro definition) from 2005 to 2023

(2) Figures depicted are contained gold only ounces within initial maiden Mineral Resource estimates announcement per S&P Capital IQ Pro data and do not represent the latest Mineral Resource estimates for the projects

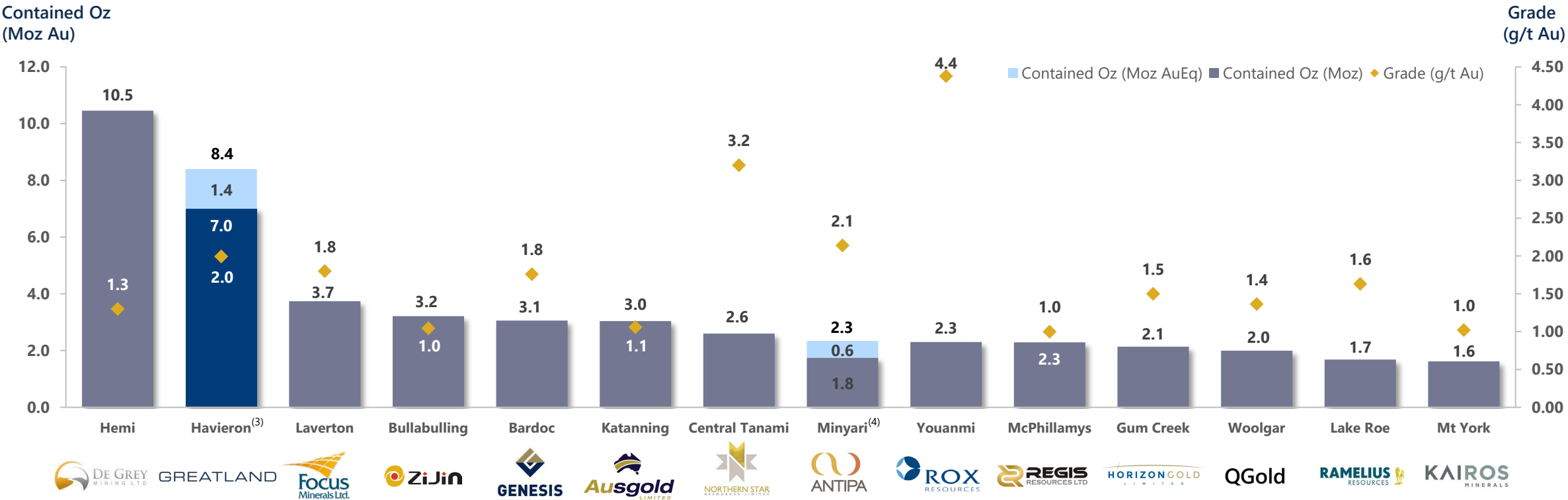
(3) Havieron Mineral Resource as per Greatland's RNS announcement of 10 December 2020 titled 'Initial Inferred Mineral Resource Estimate for Havieron' and stated on a 100% basis. Gold equivalents (AuEq) based on assumed prices of US\$1,400/oz Au and US\$3.40/lb Cu and metallurgical recoveries based on block metal grade, reporting approximately at 94%/84% for Crescent (Au/Cu), 84%/82% for Breccia (Au/Cu) which equates to a formula of approximately AuEq = Au (g/t) + 1.65 \* Cu (%)

# Havieron vs current Australian gold projects

Havieron currently ranks as one of the largest undeveloped gold projects in Australia at a superior grade

## Australian Gold Projects<sup>(1)</sup> – Current Mineral Resource

Grade > 1g/t Au<sup>(2)</sup>  
 Contained Au ounces and grades<sup>(2)</sup>



Data sourced from S&P Capital IQ Pro and Company announcements as at 4 March 2024

(1) Primary gold early and late-stage projects in Australia (per S&P Capital IQ Pro definition)

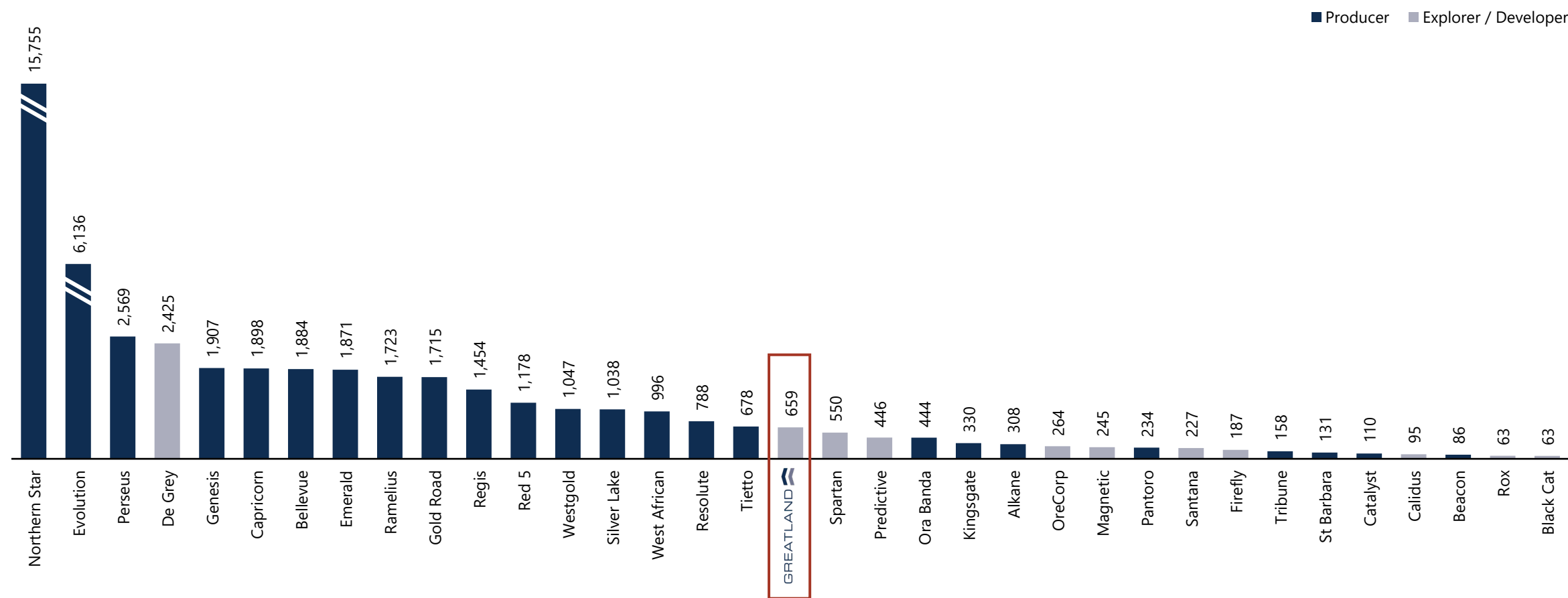
(2) Figures represent latest gold only Mineral Resource and grades. Havieron and Minyari shown on equivalent ounces and grades (AuEq) basis per company announcements

(3) Havieron Mineral Resource as per Greatland's RNS announcement of 21 December 2023 titled 'Havieron Mineral Resource Estimate Update' and stated on a 100% basis. Gold equivalents (AuEq) based on assumed prices of US\$1,700/oz Au and US\$3.75/lb Cu and metallurgical recoveries based on block metal grade, reporting approximately at 87% for Au and 87% for Cu which equates to a formula of approximately AuEq = Au (g/t) + 1.6 \* Cu (%). Refer to Appendix at the end of this presentation for more information on Greatland's Mineral Resource and Ore Reserves

(4) Minyari Mineral Resource Estimate as per Antipa's ASX announcement of 2 May 2022 titled 'Minyari Dome Project Gold Resource Increases 250% to 1.8Moz' and stated on a 100% basis

# How does Greatland compare to ASX-listed gold companies?

Market capitalisation of Greatland compared to ASX gold universe (A\$m)



Market data sourced from S&P Capital IQ Pro as at 4 March 2024



# Havieron operations overview

Decline development significantly progressed with total development of 3,060m<sup>(1)</sup>

## Exploration decline

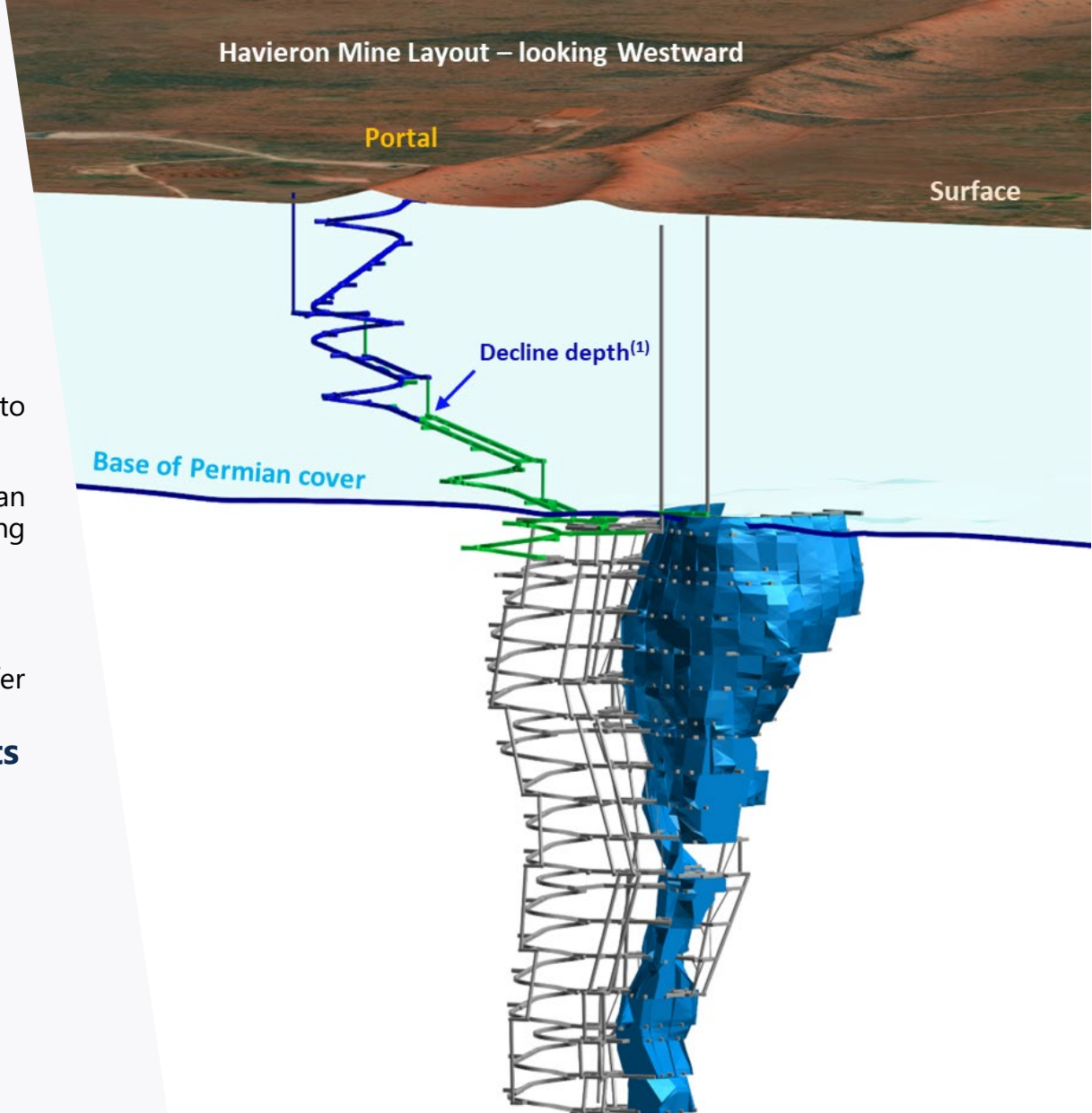
- Decline dimensions 5.8m width x 6.2m height with frequent passing bays designed to optimise haulage rates
- 2,110m of the total 2,800m of decline development required to reach base of Permian cover completed. 80% of vertical distance complete and 80 vertical metres remaining to the top of Havieron ore body<sup>(1)</sup>
- Ventilation in place to support development to the base of Permian cover
- Main access decline development currently paused for dewatering of final lower aquifer

## Greatland Havieron March 2022 Ore Reserve mine design highlights

- Sub-level open stoping (SLOS) identified as preferred mining method
- Large scale mining operation (stope dimensions up to 25m x 30m x 50m)
- Multiple mining fronts provides flexibility of operation and planning
- Up to 3Mtpa being assessed in the current Feasibility Study
- Potential access to existing Telfer infrastructure to de-risk future operations<sup>(2)</sup>

<sup>(1)</sup> As at 31 December 2023

<sup>(2)</sup> Subject to a positive feasibility study, positive decision to mine, entry into a toll processing agreement and any other infrastructure agreements, and the establishment of an infrastructure corridor and haul road

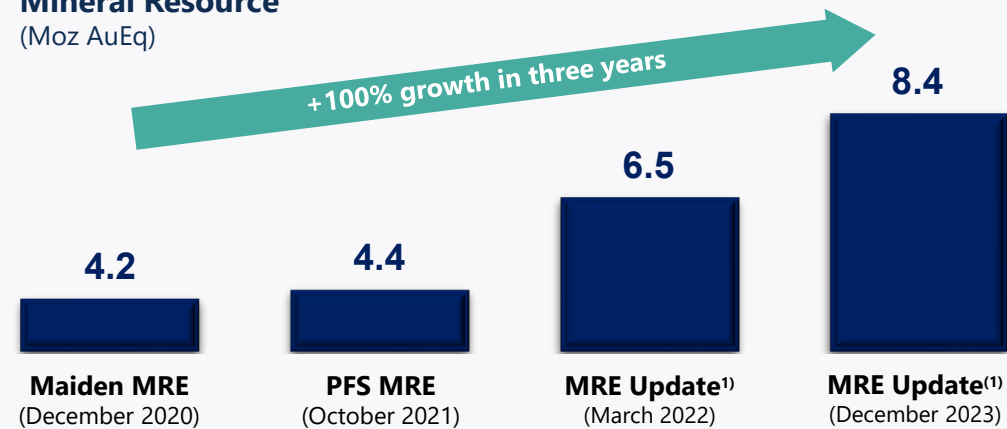


# Havieron Mineral Resource

Exceptional Mineral Resource growth continued in the Greatland December 2023 Mineral Resource Estimate

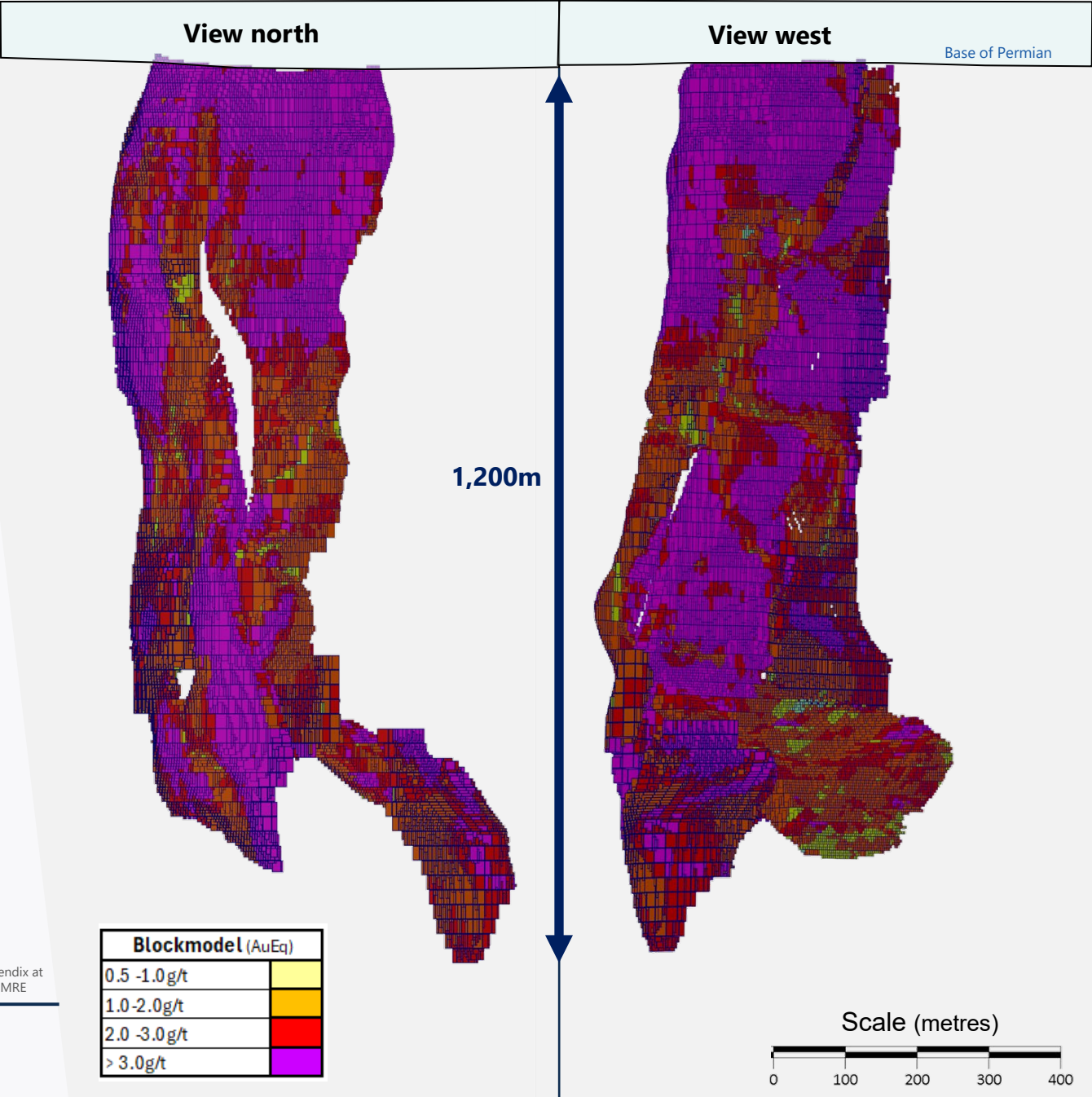
- Mineral Resource (including Ore Reserves) Estimate (**MRE**) increased to 8.4Moz AuEq<sup>(1)</sup>, a 29% increase from March 2022 MRE
  - 7.0Moz Au plus 275,000t Cu
  - 32% increase in gold equivalent metal in higher confidence Indicated category, to 5.0Moz AuEq
- 5.0Moz AuEq Indicated Mineral Resource can be considered in the updated Ore Reserve estimate as part of the Feasibility Study
- New high grade "Link Zone" defined

**Mineral Resource**  
(Moz AuEq)



<sup>(1)</sup> Greatland Mineral Resource Estimate inclusive of Ore Reserve stated on a 100% basis, noting that Greatland's interest in Havieron is 30%. Refer to Appendix at the end of this presentation for more information on Greatland's Mineral Resources and Ore Reserves. Increase stated relative to Greatland March 2022 MRE

Greatland Havieron December 2023 Mineral Resource Estimate





# Exceptional vertical ounce profile

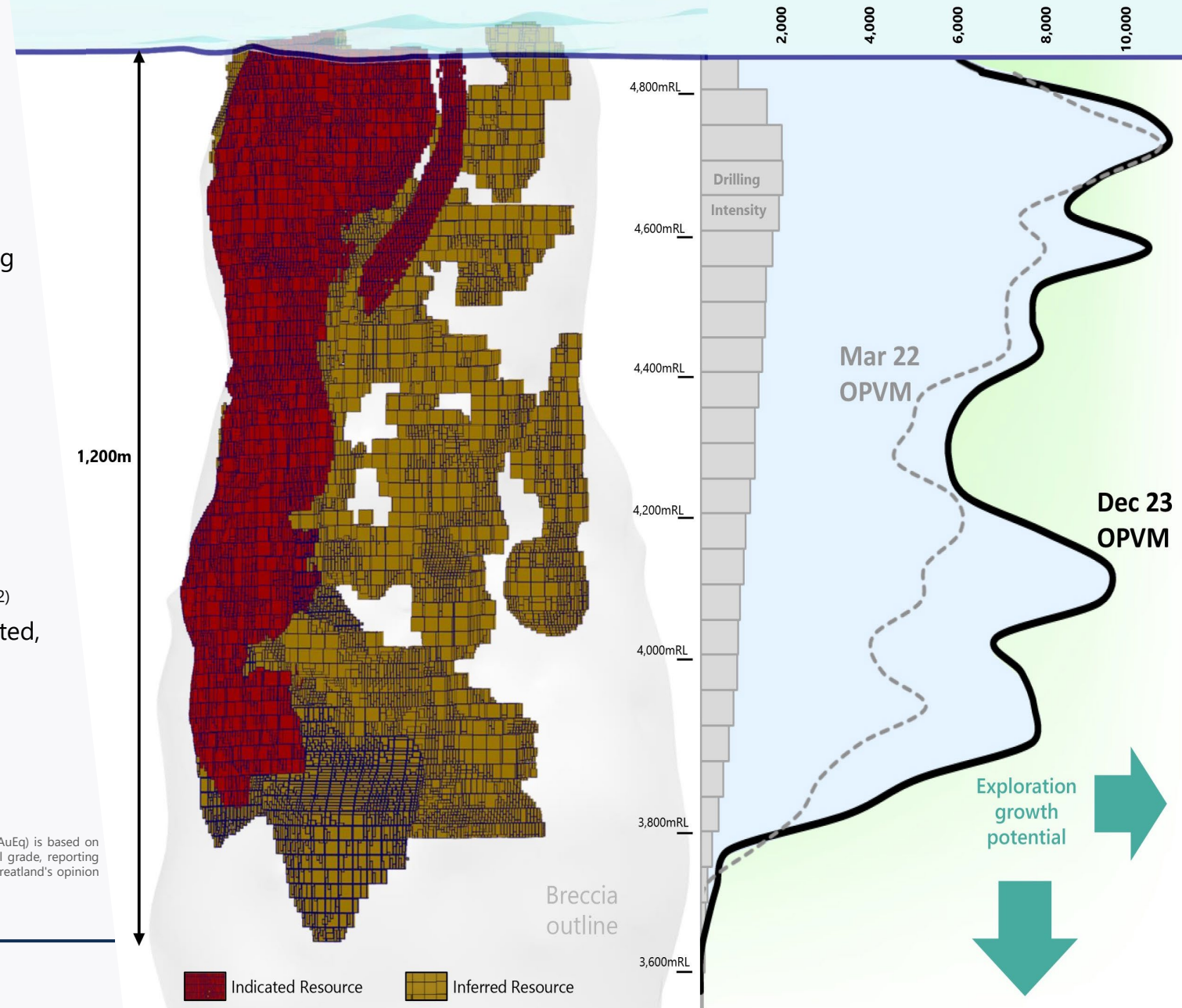
Ounces per vertical metre<sup>(1)</sup> (OPVM) continue to increase as more metres are drilled

- Ounces are contained over a compact 650 metre strike, providing for efficient and cost-effective development of in-mine infrastructure
  - **Top 300m:** averaging > **9,150** OPVM
  - **Top 1,000m:** averaging > **7,900** OPVM
- High grade South East Crescent Zone Mineral Resource now defined over 1,200 vertical metres, remains open at depth
- 70% of additional December 2023 MRE gold equivalent ounces<sup>(2)</sup> contained in the lower third of the ore body where drilling targeted, demonstrating continued quality and potential at depth

(1) OPVM represents the total contained AuEq ounces within the Mineral Resource over each vertical metre. The gold equivalent (AuEq) is based on assumed prices of US\$1,700/oz Au and US\$3.75/lb Cu for Mineral Resource and metallurgical recoveries based on block metal grade, reporting approximately at 87% for Au and 87% for Cu which equates to a formula of approximately  $AuEq = Au (g/t) + 1.6 * Cu (\%)$ ; In Greatland's opinion both gold and copper have a reasonable potential to be recovered and sold

(2) Relative to Greatland's March 2022 MRE

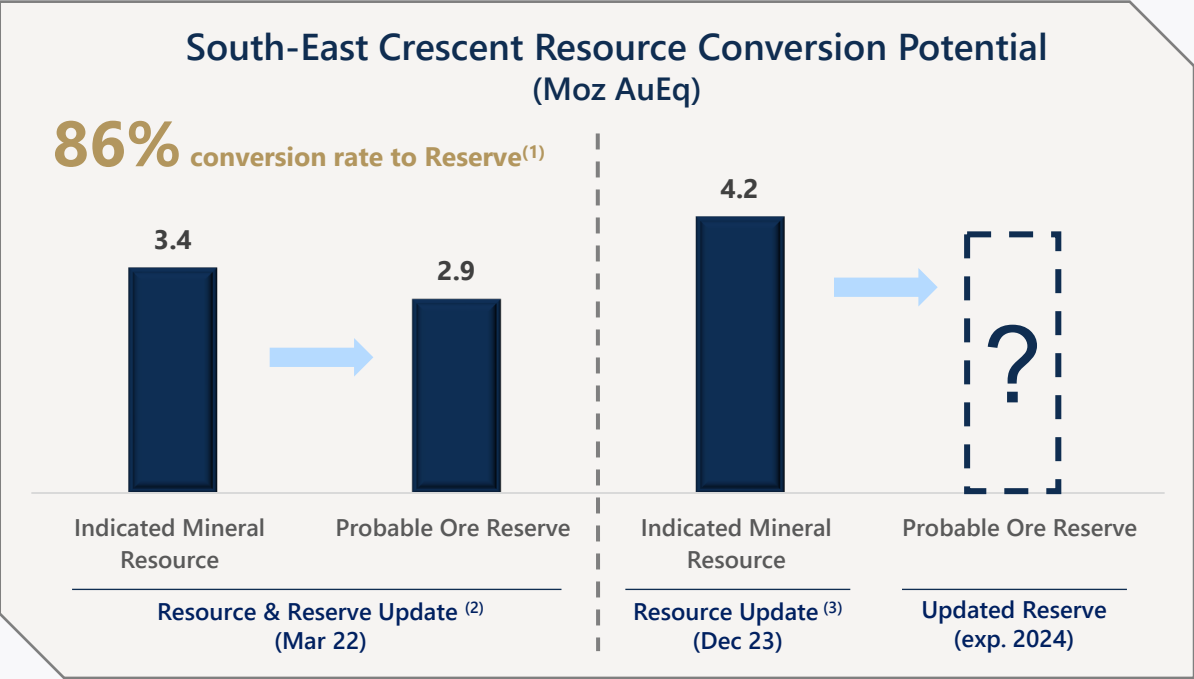
## Greatland Havieron December 2023 Mineral Resource Estimate





# High Resource to Reserve conversion

Exceptionally high conversion of Indicated SE Crescent Resource demonstrates the quality of the Havieron deposit<sup>(1)</sup>



Greatland Havieron March 2022 Ore Reserve metrics:

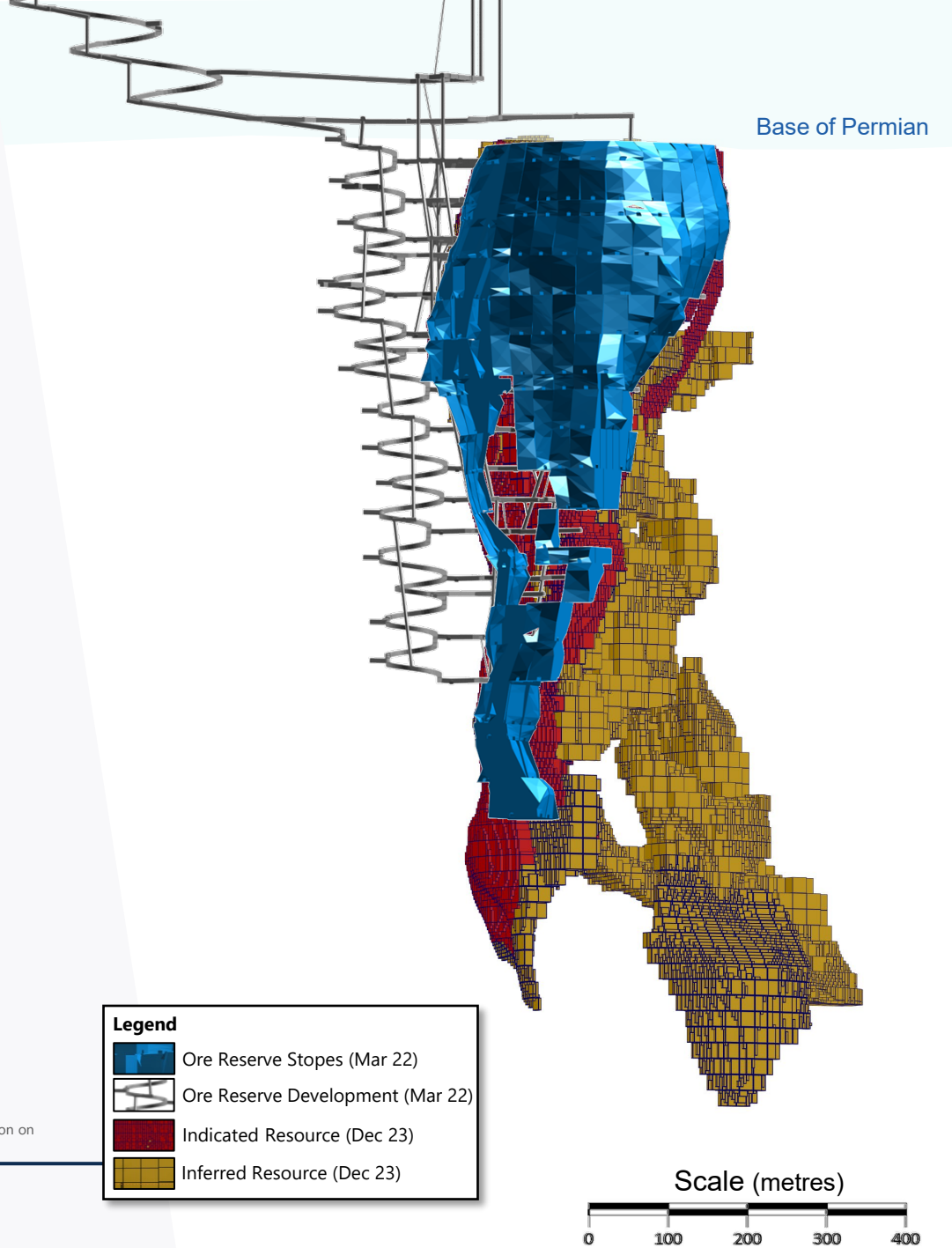
- 8 years of Ore Reserves already defined
- The first 5 years of Ore Reserves comes from the top 400m of the orebody

<sup>(1)</sup> Conversion rate measured as the percentage of Ore Reserves from the Greatland Havieron March 2022 Indicated Mineral Resource for the South East Crescent Zone

<sup>(2)</sup> Based on Greatland Havieron March 2022 Ore Reserve and Mineral Resource estimates.

<sup>(3)</sup> Based on Greatland December 2023 Mineral Resource estimate.

Mineral Resources inclusive of Ore Reserves and stated on a 100% basis, noting that Greatland's interest in Havieron is 30%. Refer to Appendix at the end of this presentation for more information on Greatland's Mineral Resources and Ore Reserves

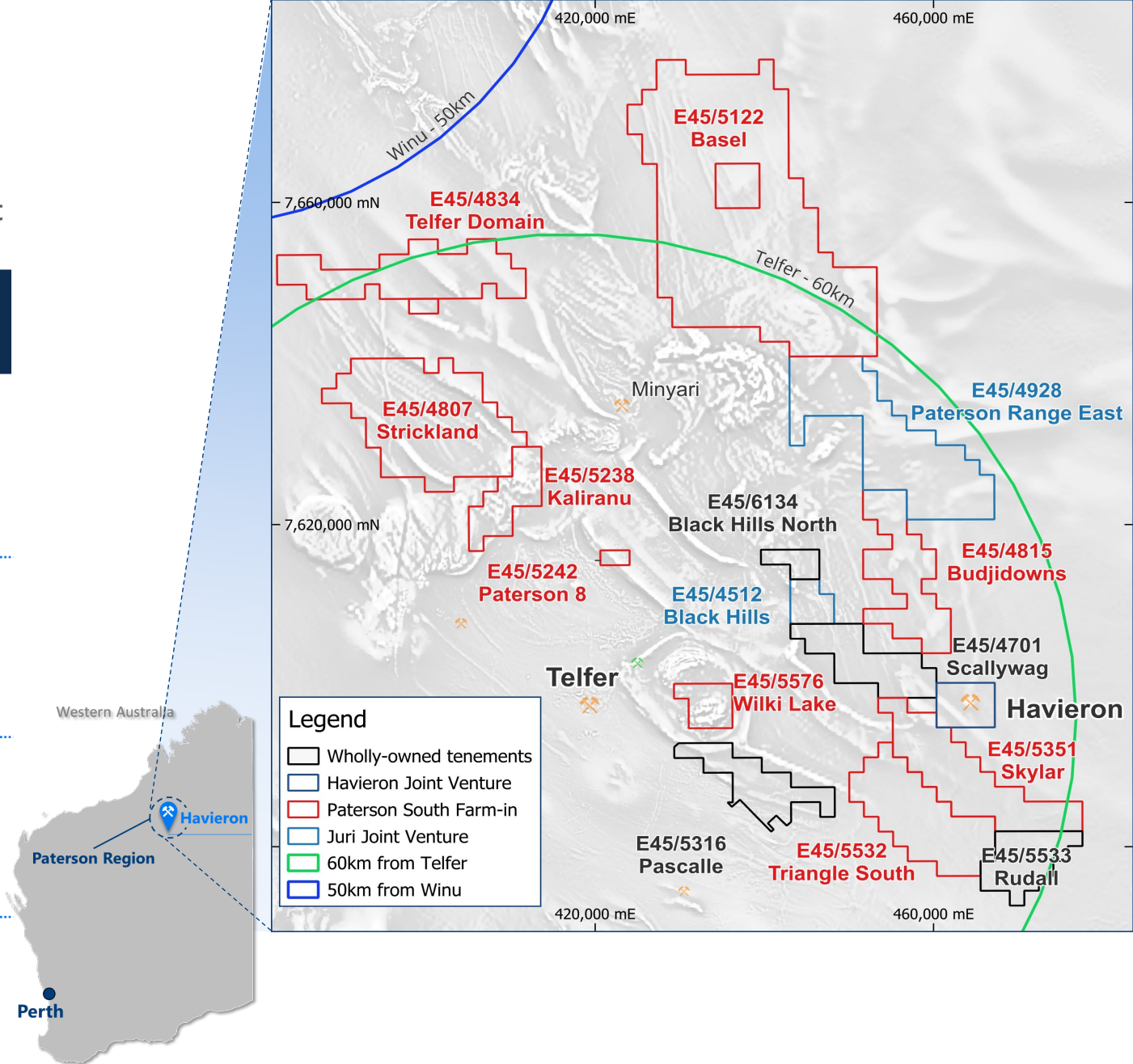


# Paterson regional exploration

~2,600km<sup>2</sup> of tenure<sup>(1)</sup> in the highly prospective Paterson Province, home to Havieron, Telfer and Rio Tinto's Winu deposit

Project Area	Land Size (km <sup>2</sup> )	Features
1 Paterson South (up to 75%)	1,537	<ul style="list-style-type: none"><li>Completed maiden drilling campaign with drilling on Budjidowns tenement. Currently developing programs to test Telfer and Havieron style targets across the project. Heritage surveys completed for targets on Skylar, Wilki Lake and Basel tenements. Further drilling planned for 2024. Further information in Appendix</li></ul>
2 Scallywag (100%)	244	<ul style="list-style-type: none"><li>Diamond drilling has been completed at the A35, A34, Swan, Pearl and Ramses targets. Modelling of magneto-telluric survey has identified a conductor at depth that is a high priority drill target for 2024</li></ul>
3 Juri (49%)	249	<ul style="list-style-type: none"><li>Two prospective tenements covering ~250km<sup>2</sup> near to Havieron. Managed by Newmont as 51% joint venture partner</li></ul>
4 Canning (100%)	534	<ul style="list-style-type: none"><li>Tenements contain two large magnetic 'bullseye' anomalies similar to the Havieron deposit magnetic signature</li></ul>

(1) Includes tenements subject to earn ins, Joint ventures and uncontested tenement applications

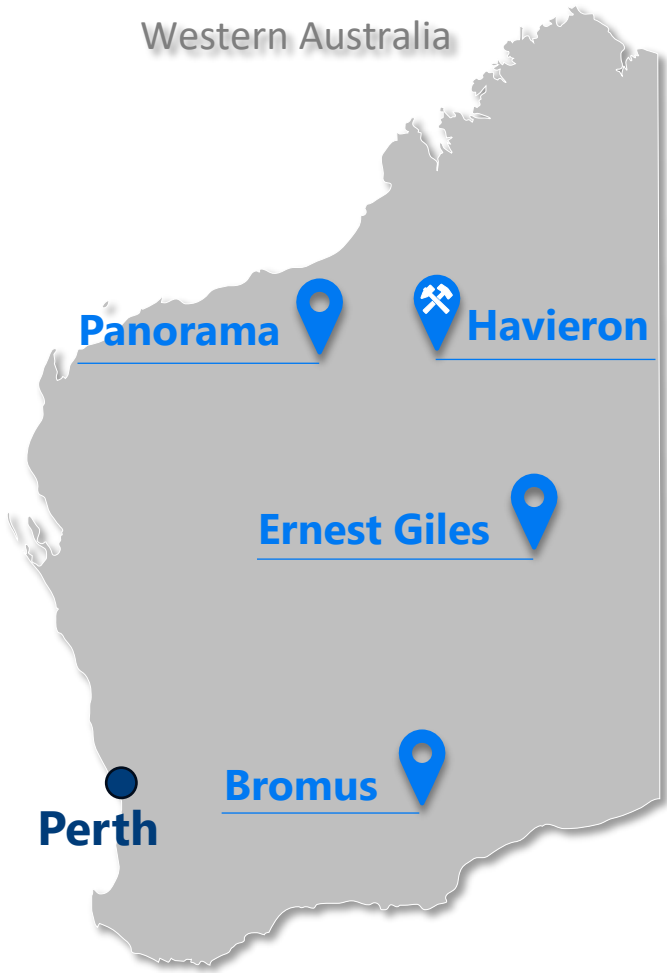


# Broader exploration (beyond Paterson Province)

Active exploration campaign beyond the Paterson Province with untested prospective greenstone belt at Ernest Giles, Panorama and Bromus

Project Area	Land Size (km <sup>2</sup> ) <sup>(1)</sup>	Mineral Deposit	Features
1 Ernest Giles (100%)	1,967	Au	<ul style="list-style-type: none"><li>+100km long Archean greenstone, under cover, virtually unexplored</li><li>Land access agreement concluded in September 2023</li><li>Diamond core drilling, co-funded by the WA Government Exploration Incentive Scheme, completed on Meadows prospect in December 2023; confirmed anomalous gold mineralisation and pathfinder geochemistry</li><li>Follow up induced polarization (IP) survey and RC drilling program planned in 2024</li></ul>
2 Panorama (100%)	155	Au Cu Ni	<ul style="list-style-type: none"><li>Outcropping greenstone with prospectivity for gold, nickel and copper sulphides</li><li>Gold mineralisation identified from reconnaissance rock chip sampling</li><li>Bedrock gold mineralisation and surface nuggets collected over 6km of strike</li><li>Surface sampling program completed in November 2023 confirmed nickel prospectivity, planning underway to follow up on geochemical and geophysical anomalies</li></ul>
3 Bromus (100%)	87	Au Ni Li	<ul style="list-style-type: none"><li>~16km of strike of a north-west trending under-explored Archaean greenstone belt</li><li>Prospective for nickel sulphides, gold and lithium</li><li>Recently entered into a heritage agreement with Native Title Holders which provides protocol for carrying out heritage surveys and for the monitoring of certain works</li></ul>

(1) Includes granted and pending tenements





# Building a multi-asset company of scale with significant upside

Operating in a low-risk jurisdiction at the development stage of a world class deposit and located near established infrastructure

## Havieron

High grade gold-copper deposit with significant early works development already complete

Greatland Havieron  
Mineral Resource (Dec 2023):

8.4Moz AuEq @ 2.0g/t AuEq

including Indicated:

5.0Moz AuEq @ 3.1g/t AuEq

- Q4'20: Maiden Resource
- Q4'21: Pre-Feasibility Study and Maiden Reserve
- Q1'22: Reserve and Resource upgrade
- Q4'23: Resource upgrade
- Feasibility Study (targeted 2024)

## Exploration Focus

Strategic presence in the highly prospective Paterson province including the Paterson South JV with Rio Tinto

Paterson region exploration area

~2,600km<sup>2</sup>

- Paterson South JV (up to 75%)
- Scallywag (100%)
- Juri JV (49%)
- Canning (100%)

Highly prospective broader exploration portfolio across WA

>2,300km<sup>2</sup>

- 100% ownership:
- Ernest Giles
  - Panorama
  - Bromus

## Well Positioned

Strong platform for growth strengthened by experienced board and strategic investors

Letter of Support from Tier-1 financial institutions for proposed debt funding

A\$220m

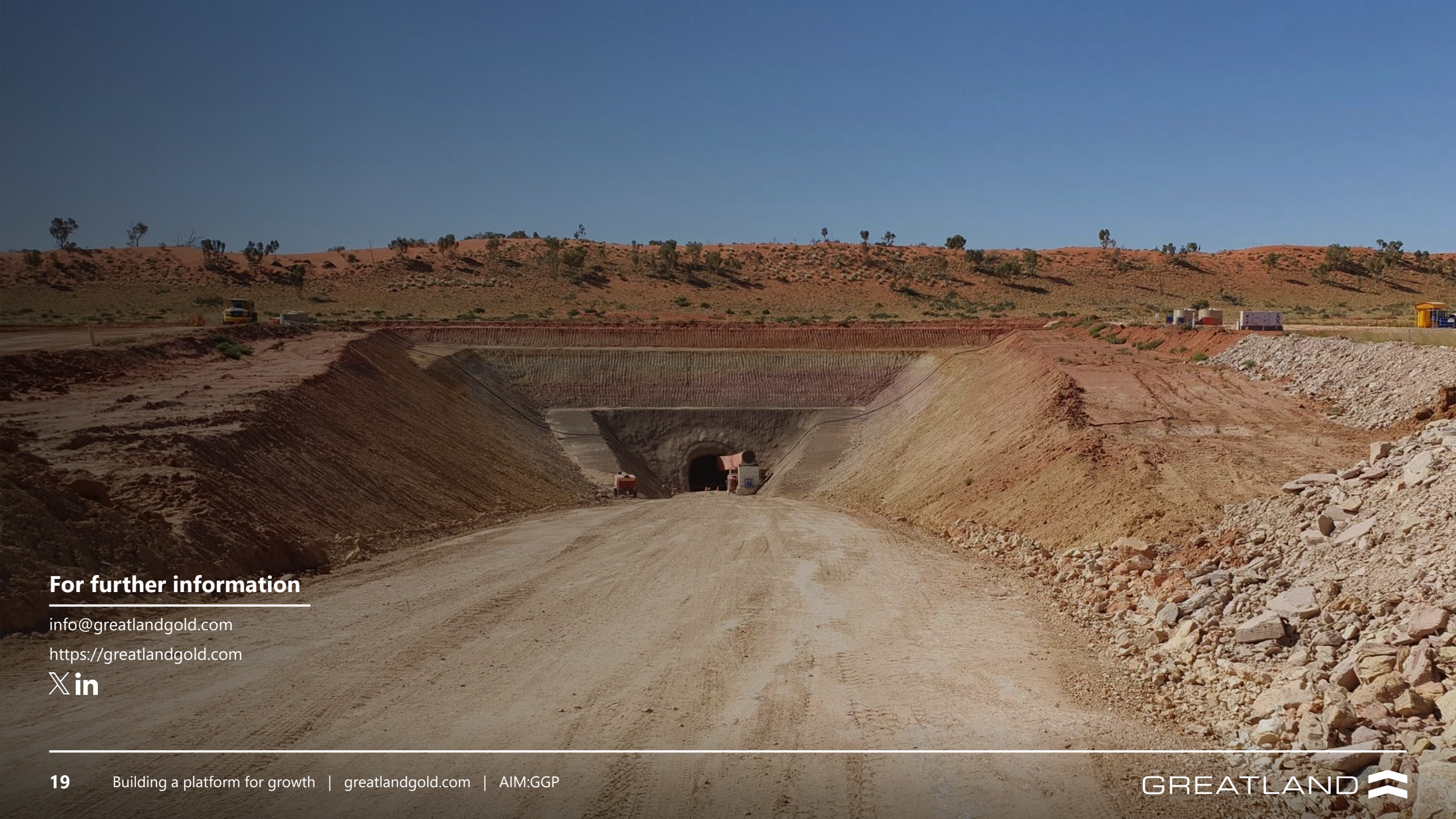
Access to standby loan facility

A\$50m (undrawn)

Market Capitalisation  
A\$659m / £338m







## For further information

[info@greatlandgold.com](mailto:info@greatlandgold.com)

<https://greatlandgold.com>





# Appendix: Recent history



(1) Refer to Greatland's RNS announcement titled "Results from First Drill Hole of Current Campaign at Havieron" dated 19 November 2018 for further information  
(2) Mineral Resource inclusive of Ore Reserve and are stated on a 100% basis noting that Greatland's interest in Havieron is 30%. Refer to Appendix at the end of this presentation for more information on Greatland's Mineral Resources and Ore Reserves



# Appendix: Mineral Resource & Ore Reserve statement

**Table 1:** Greatland Havieron March 2022 Mineral Resource estimate<sup>(1), (2), (3), (4)</sup>

Domain	Classification	Tonnage (Mt)	Grade		Metal content		AuEq Metal <sup>(3)</sup>
			Au (g/t)	Cu (%)	Au (Moz)	Cu (kt)	Moz
South East Crescent	Indicated	26	3.3	0.52	2.8	136	3.4
	Inferred	7	3.2	0.33	0.7	22	0.8
Northern Breccia	Indicated	9	1.1	0.11	0.3	10	0.4
	Inferred	36	1.0	0.1	1.2	37	1.3
Eastern Breccia	Indicated	–	–	–	–	–	–
	Inferred	14	1.2	0.09	0.5	13	0.6
Total	Indicated	35	2.8	0.42	3.1	146	3.8
	Inferred	57	1.3	0.13	2.4	72	2.7
Grand Total	Indicated + Inferred	92	1.9	0.24	5.5	218	6.5

**Table 3:** Greatland Havieron December 2023 Mineral Resource estimate<sup>(1), (2), (5), (6)</sup>

Domain	Classification	Tonnage (Mt)	Grade		Metal content		AuEq Metal <sup>(5)</sup>
			Au (g/t)	Cu (%)	Au (Moz)	Cu (kt)	Moz
South East Crescent	Indicated	36	3.0	0.42	3.6	150	4.2
	Inferred	8	2.1	0.19	0.6	15	0.6
Link Zone	Indicated	2	2.7	0.20	0.1	3	0.2
	Inferred	5	1.4	0.26	0.2	12	0.3
Breccia	Indicated	13	1.3	0.11	0.5	14	0.6
	Inferred	68	0.9	0.12	2.1	79	2.5
Grand Total	Indicated + Inferred	131	1.7	0.21	7.0	275	8.4

Greatland reports its Mineral Resource and Ore Reserve estimates under the JORC code

- (1) Results are reported to one (gold) and two (copper) significant figures to reflect appropriate precision in the estimate, and this may cause some apparent discrepancies in totals. Results represent 100% of the Mineral Resource for Havieron. Mineral Resources in the South East Crescent and Link Zone are reported within a A\$80 NSR/t shell while Mineral Resources in the Breccias are reported within a A\$50 NSR/t shell.
- (2) Mineral Resource inclusive of Ore Reserve and are stated on a 100% basis noting that Greatland's interest in Havieron is 30%
- (3) March 2022 MRE and ORE gold equivalent (AuEq) based on assumed prices of US\$1,450/oz Au and US\$3.23/lb Cu for Ore Reserve and assumed prices of US\$1,600/oz Au and US\$3.50/lb Cu for Mineral Resource and metallurgical recoveries based on block metal grade, reporting approximately at 88% for Au and 84% for Cu which in both cases equates to a formula of approximately  $AuEq = Au (g/t) + 1.5 * Cu (%)$ . It is the company's opinion that all the elements included in the metal equivalents calculation have a reasonable potential to be recovered and sold
- (4) Refer to the Greatland RNS announcement of 3 March 2022 titled 'Havieron Resource and Reserve Update'
- (5) December 2023 MRE gold equivalent (AuEq) based on assumed prices of US\$1,700/oz Au and US\$3.75/lb Cu and metallurgical recoveries based on block metal grade, reporting approximately at 87% for Au and 87% for Cu which equates to a formula of approximately  $AuEq = Au (g/t) + 1.6 * Cu (%)$
- (6) Refer to the Greatland RNS announcement of 21 December 2023 titled 'Havieron Mineral Resource Estimate Update'

**Table 2:** Greatland Havieron March 2022 Ore Reserve estimate<sup>(2), (3), (4)</sup>

Classification	Tonnage (Mt)	Grade		Metal content		AuEq Metal <sup>(3)</sup>
		Au (g/t)	Cu (%)	Au (Moz)	Cu (kt)	Moz
Proved	–	–	–	–	–	–
Probable	25	3.0	0.44	2.4	109	2.9
Total Ore Reserve	25	3.0	0.44	2.4	109	2.9

**Note:** Ore Reserves are reported above a cut-off of A\$95 NSR/t and reported within mining shapes based on a sub-level open stoping mining method. All reported metal was derived from the South East Crescent zone only.

# Appendix: Paterson South farm-in with Rio Tinto Exploration

Greatland is the Manager of a farm-in and joint venture arrangement with Rio Tinto Exploration to accelerate exploration across over 1,500km<sup>2</sup> of highly prospective tenure within the Paterson Province of Western Australia located near Havieron

- Tenement package is relatively underexplored and a logical fit in Greatland's Paterson portfolio
- Hosts several underexplored magnetic anomalies with targets that are considered to be the closest to Havieron lookalikes within the Paterson Province, and prospective Telfer style targets
- Maiden drilling programme completed, currently developing programs to test Telfer and Havieron style targets across the project in 2024
- Successfully completed heritage surveys on which clears targets on three tenements for on-ground exploration

COMPLETED			
	Minimum Commitment	Stage 1 Farm-In	Stage 2 Farm-In
Key terms	<ul style="list-style-type: none"> <li>▪ Minimum Commitment of A\$1.1m of expenditure and 2,000m of drilling to be completed before 31 Dec 2024</li> <li>▪ Greatland may withdraw once it has met this Minimum Commitment</li> </ul>	<ul style="list-style-type: none"> <li>▪ Greatland may earn a 51% interest by spending at least A\$7.1m and completing 7,500m of drilling (inclusive of the Minimum Commitment) within four years</li> <li>▪ If Greatland completes the Stage 1 Farm-In, an unincorporated joint venture (<b>Paterson South JV</b>) will be formed between Greatland (51%) and Rio Tinto (49%) and Greatland will be the manager of the Paterson South JV</li> </ul>	<ul style="list-style-type: none"> <li>▪ Greatland may earn an additional 24% interest by spending at least an additional A\$14m and completing a further 17,000m of drilling within three years of completing the Stage 1 Farm-In</li> <li>▪ Rio Tinto is entitled, after the Stage 1 Farm-In, to elect to contribute to its share of Paterson South JV expenditure and if Rio Tinto so elects, Greatland's Paterson South JV interest will remain at 51% and the Stage 2 Farm-In will not apply</li> </ul>
Timeframe	▪ Before 31 Dec 2024	▪ Within 4 years	▪ Within 3 years of completion of the Stage 1 Farm-In
Minimum expenditure	▪ A\$1.1m	▪ A\$6.0m (cumulative A\$7.1m)	▪ A\$14m (cumulative A\$21.1m)
Minimum drilling	▪ 2,000m	▪ 5,500m (cumulative 7,500m)	▪ 17,000m (cumulative 24,500m)
Farm-in interest	▪ None	▪ 51% (cumulative)	▪ 75% (cumulative)

A\$1.1m Minimum Commitment

A\$21.1m over up to seven years